

**ПРОБНЕ  
ЗОВНІШНЄ НЕЗАЛЕЖНЕ ОЦІНЮВАННЯ  
З АНГЛІЙСЬКОЇ МОВИ**

Час виконання – 120 хвилин

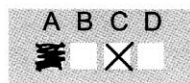
Робота складається з трьох частин. Частина «Читання» містить 22 завдання. У частині «Використання мови» – 20 завдань. Відповіді на ці завдання Ви маєте позначити в *бланку А*. Частина «Письмо» містить завдання, відповідь на яке Ви маєте записати в *бланку Б*.

**Інструкція щодо роботи в зошиті**

1. Правила виконання зазначені перед завданнями кожної нової форми.
2. Відповідайте тільки після того, як Ви уважно прочитали та зрозуміли завдання.
3. У разі необхідності використовуйте як чернетку вільні від тексту місця в зошиті.
4. Намагайтеся виконати всі завдання.

**Інструкція щодо заповнення бланків відповідей**

1. До *бланків А і Б* записуйте лише правильні, на Вашу думку, відповіді.
2. Відповіді вписуйте чітко, дотримуючись вимог інструкції до кожної форми завдань.
3. Неправильно позначені, підчищені відповіді в *бланку А* вважатимуться помилкою.
4. Якщо Ви позначили в *бланку А* відповідь неправильно, можете виправити її, замалювавши попередню позначку та поставивши нову, як показано на зразку:



5. Виконавши завдання частини «Письмо» у тестовому зошиті, акуратно запишіть відповідь у *бланк Б*.
6. Ваш результат залежатиме від загальної кількості правильних відповідей, зазначених у *бланку А*, та якості виконання завдання в *бланку Б*.

Ознайомившись з інструкціями, перевірте якість друку зошита та кількість сторінок. Їх має бути 12.

Позначте номер Вашого зошита у відповідному місці *бланка А* так:

1	2	3	4	5	6	7	8	9	10	11	12	13	14	15
X														

**Бажаємо Вам успіху!**

Частина «ЧИТАННЯ»

Reading

Task 1

Read the texts below. Match choices (A–H) to (1–5). There are three choices you do not need to use. Write your answers on the separate answer sheet.

1

A prominent physicist and skeptic of global warming spent two years trying to find out if mainstream climate scientists were wrong. In the end, he determined they were right: Temperatures really are rising rapidly.

2

The most widely used flu vaccine in the United States is only about 60 percent effective in healthy adults, new research indicates.

3

The US and Chinese diplomats also "discussed ways in which the two countries can work together" on regional and international challenges in places like Afghanistan, North Korea, Iran and the Middle East.

4

The Jersey Boys show, a documentary-style musical, is based on the popular 60s group the *Four Seasons*. Fans young and old are buying up tickets in an effort to experience the heart-rending tale of the iconic 60s group.

5

In a speech at New York University, Dennis Walcott said the new schools would open over the next two years and would include both charter schools and traditional schools.

**Which piece of news deals with \_\_\_\_\_?**

- A** political life
- B** movie industry
- C** educational issues
- D** entertainment
- E** business life
- F** sporting events
- G** health care
- H** environmental problems

**Task 2**

**Read the text below. For questions (6–10) choose the correct answer (A, B, C or D). Write your answers on the separate answer sheet.**

**Hollywood's First Child Star**

At the height of her career, “Baby” Marie Osborne was one of the most popular actresses in the world, said *The Times*. Driven round Hollywood in a limousine, she earned every few weeks what the average American took home annually. She was just five years old. Arguably the first significant child star in movie history, she struggled (like those who came after) to adjust to adult life, and found herself reduced to poverty as quickly as she had risen to riches. Or as Osborne herself once noted, “I set the trend for virtually every other child star who followed.”

She was born Helen Alice Myers in Colorado, and was adopted at the age of three months. Her new parents took her to Los Angeles, where they worked in the movie industry. Little Marie, as they called her, was spotted on set by the actor and director Henry King, who cast her in a string of films that exploited her winsome charms. The most famous was *Little Mary Sunshine* (1916). The film was a hit with both cinema-goers and critics, one of whom was so moved by Osborne's performance that he called it “a revelation in art.”

Osborne's life had as many reversals as her films' plots, said *The New York Times*. On retiring at eight, she discovered her parents had blown her fortune. But while working as a shop-assistant in her 20s, she learned her real father had left her a large sum of money. With the help of King, she re-entered the movie business, acting as a stand-in for stars such as Ginger Rogers. Later, she reinvented herself as a costumer – work she far preferred, she said, to being an actress. Films on which she earned a credit included *Cleopatra* and *The Godfather Part II*.



- 6 Which of her occupations did Marie like best?
- A shop-assistant
  - B actress
  - C stand-in
  - D costumer
- 7 According to the text, everything is true, **EXCEPT** \_\_\_\_\_.
- A Marie inherited a fortune
  - B Marie's acting career ended early
  - C Marie gave impulse to fan culture
  - D Marie had a large income as a child star
- 8 The phrase "*her parents had blown her fortune*" (paragraph 3) is closest in meaning to \_\_\_\_\_.
- A they'd ruined her career
  - B they'd made her happy
  - C they'd wasted her money
  - D they'd stolen her childhood
- 9 Which of the following is stated in the text about Marie?
- A She had foster parents.
  - B Her dreams ended in failure.
  - C She outgrew her roles.
  - D Her parents promoted her.
- 10 What can be inferred about Marie from the text?
- A She earned a credit being a prompter.
  - B Her road to success in movies was smooth.
  - C She appeared as the lead in her teens.
  - D Her life was full of ups and downs.

Task 3

Read the texts below. Match choices (A–H) to (11–16). There are two choices you do not need to use. Write your answers on the separate answer sheet.

11

### Jack of the Wood

**95 Patton Ave.**

*A cozy café-restaurant.  
Features the best acoustic music  
and dancing in the evening.  
The menu includes international cuisine,  
vegetarian fare and barbecue.  
Coffee and cakes in the afternoon  
from 15.00–17.00*

12



### Whiskey Tavern

**81 Broadway St.**

*The best new place to hang out in downtown Ashville. Come by and have national food, good spirits and a fun time. Live jazz every Monday and Tuesday nights. Open nightly year round and for lunch Saturday and Sunday during football season.*

13

### Prir frakkar



Café-Restaurant

**Specialities:**  
Fresh seafood and  
Whale meat

Open daily for lunch and  
dinner except Sat./Sun.  
for dinner only

**Reservations tel. 552 3939  
Baldursgata 14**

14



Laugavegur 28b. Tel. 551 6513



Welcome to  
**Sjanghæ Restaurant**

At our Chinese restaurant you will  
find not only fresh seafood and meat  
but also we are the only restaurant in  
Iceland with expert chefs from China.

Our spices are flown in directly  
from Asia.

Wine and locally brewed  
beer available.

We offer you various menus  
to choose from.

15

### Vegeterian



A totally vegetarian  
restaurant specializing  
in international cuisine  
that features fresh local  
produce with mostly  
organic ingredients.  
Daily specials, fast-food  
and take out.

Tel. 552 2028

**Open:**

**11.30–21.00 weekdays  
16.00–21.00 Sat. /Sun.**

16

### HOTEL LOFTLEIÐIR

ICELAND AIR HOTELS

At our two restaurants we serve the freshest and  
tastiest veal and lamb you'll find anywhere.  
Our chefs' culinary skills, combined with the  
finest available ingredients, guarantee you a  
meal of the highest quality.

We also offer an international selection  
of beers and wines.

**Open: Mon.–Thur. 9.30–21.00**

**Fri., Sat., Sun. 10.00–22.00**

**tel. 5050 925**

At this restaurant \_\_\_\_\_.

- A oriental food and local beer are served
- B they mainly serve sea food
- C unique and delicious meat courses are offered
- D you can make on-line reservations
- E you can enjoy live music twice a week
- F international cuisine and music are offered
- G you can eat in or take away
- H meat as well as vegetarian dishes is available

**Task 4**

**Read the text below. Choose from (A–H) the one which best fits each space (17–22). There are two choices you do not need to use. Write your answers on the separate answer sheet.**

**Coke**

Coca-Cola (often abbreviated to “Coke”) is a cola drink and is the world’s most popular carbonated soft drink. The Coca-Cola Company’s headquarters are located in Atlanta, Georgia, (17) \_\_\_\_\_ around 1884. Coke’s inventor, John Pemberton, was not a quickwitted marketer of his drink, and the ownership of Coke eventually passed to Asa Candler, (18) \_\_\_\_\_. Candler’s successful marketing, continued by his successors such as Robert Woodruff, established Coke as a major soft drink first in the United States and later around the world.

Originally designed to be sold at soda fountains, (19) \_\_\_\_\_, whose distinctive shape has become a part of the drink’s branding. Major advertising campaigns have established Coca-Cola slogans such as “The pause that refreshes” as part of popular culture. Nevertheless, Coca-Cola has been criticised for its possible negative health effects, with many urban myths surrounding it. In addition, (20) \_\_\_\_\_ has been periodically challenged, in particular by its main rival Pepsi-Cola. This tension reached its peak during the 1980s, at the height of the Cola Wars, which eventually resulted in the heavily-publicised introduction of “New Coke”, (21) \_\_\_\_\_. The widely unpopular decision was eventually voided in the face of public opposition.

Since then, the Coca-Cola Company has on occasion introduced soft drinks under the Coca-Cola brand name. The most famous of these is Diet Coke, which has become a major diet cola, but others exist, such as Cherry Coke. There are also (22) \_\_\_\_\_ but which remain unaffiliated with Coca-Cola the drink, such as Sprite.

- A** Coca-Cola was later sold in bottles
- B** intended to replace the original Coca-Cola
- C** where the first television ad was created
- D** the commercial success of the drink
- E** some memorable slogans for Coca-Cola
- F** whose company remains the producer of Coke today
- G** where the drink was first invented
- H** some drinks marketed by the company



Частина «ВИКОРИСТАННЯ МОВИ»

Use of English

Task 5

Read the text below. For questions (23–32) choose the correct answer (A, B, C or D).  
Write your answers on the separate answer sheet.

**Cherish Your Friends**

Our high school years are the defining times in our lives that (23) \_\_\_\_\_ who we are, where we are going, and what we are going to do. Aside from this, they (24) \_\_\_\_\_ us to build strong friendships with people. We get to see which people are going to be there for the (25) \_\_\_\_\_ of our lives and those who will just disappear over the years.

A friend is someone who is there for you, through it all. Through the pressure, and drama, they are the one (26) \_\_\_\_\_ thing in your life that never fades away. I have realized at the (27) \_\_\_\_\_ of sixteen that friends are not something you should take lightly, if we have found even just a (28) \_\_\_\_\_ we are blessed.

They are the people that we sing our lungs out in the car shouting “Glamorous”, the people we cry to, and most (29) \_\_\_\_\_ the people who will always have a shoulder to (30) \_\_\_\_\_ on. It is essential to evaluate your (31) \_\_\_\_\_ with your friends. You can see if they are the people you can go to with anything or if they are just another face in the (32) \_\_\_\_\_ when you have a serious issue going on.

23	A	describe	B	shape	C	recognize	D	notice
24	A	make	B	allow	C	let	D	afford
25	A	stage	B	period	C	epoch	D	rest
26	A	chronic	B	long	C	constant	D	routine
27	A	time	B	year	C	age	D	period
28	A	pair	B	team	C	company	D	couple
29	A	importantly	B	urgently	C	favourably	D	successfully
30	A	set	B	place	C	turn	D	lean
31	A	attitude	B	contact	C	relationship	D	affair
32	A	people	B	crowd	C	public	D	audience



**Task 6**

**Read the texts below. For questions (33–42) choose the correct answer (A, B, C or D). Write your answers on the separate answer sheet.**

**Oldest Musical Instrument Found**

According to the University of Tübingen archeologist Nicholas Conard, more than 35,000 years ago, our ancestors, (33) \_\_\_\_\_ in present-day southwestern Germany, were playing sophisticated music. In June he announced that he and his colleagues (34) \_\_\_\_\_ up an ancient bone flute in Hohle Fels. “The five-holed instrument – carved from the bone of a griffon vulture – might be capable of expressing (35) \_\_\_\_\_ harmonic variety than the modern-day flute”, says Nikolai Tarasov, a recorder specialist.

Conard’s group discovered fragments of three ivory flutes in their 2008 digs. Previously four other bone and ivory flutes (36) \_\_\_\_\_ in the same area. Collectively, these (37) \_\_\_\_\_ as the oldest known musical instruments.

33	A	live	B	living	C	lived	D	were living
34	A	have dug	B	were dug	C	had dug	D	are dug
35	A	greatest	B	great	C	the greatest	D	greater
36	A	found	B	were being found	C	had been found	D	have found
37	A	regarded	B	are regarding	C	are regarded	D	have regarded

### A Skiing City Break in Austria

Postcard-pretty Innsbruck is the ideal destination for anyone who (38) \_\_\_\_\_ to combine a skiing holiday with a city break. The capital of the Habsburg Empire in the late middle ages, it has a charming old town with many ornate medieval buildings, together with natural baroque additions, (39) \_\_\_\_\_ the cathedral. The city is home to a wealth (40) \_\_\_\_\_ museums, galleries, bars and restaurants, and (41) \_\_\_\_\_ twice played host to the Winter Olympics, so it has (42) \_\_\_\_\_ winter-sports facilities, and – just a short train ride out of town – ski tracks to challenge the most accomplished of skiers.

38	A	want	B	wants	C	wanted	D	has wanted
39	A	included	B	includes	C	including	D	include
40	A	for	B	off	C	in	D	of
41	A	has	B	have	C	had	D	has been
42	A	lot of	B	lots	C	a lot of	D	a lot

**Частина «ПИСЬМО»**

**Writing**

- 43 You've got a letter from your English pen-friend. In his/her letter he/she describes his/her impressions of visiting the festival of modern pop-music. Write a letter to your pen-friend and say

- what kind of music you like best
- how your favourite kind of music makes you feel
- what your parents think about your musical preferences

Write a letter of at least 100 words. Do not use any personal information (e. g., names, dates, addresses, etc.). Start your letter in an appropriate way.



Український центр оцінювання якості освіти

**A**

Увага!  
Цей бланк перевіряє комп'ютер! Ваші відповіді у бланку є результатом Вашої роботи.

АНГЛІЙСЬКА МОВА

Позначте номер Вашого зошита так: ☒

1 2 3 4 5 6 7 8 9 10 11 12 13 14 15

Правильну відповідь у завданнях позначайте тільки так: ☒

Неправильну відповідь можна виправити, заштрихувавши попередню позначку та поставивши нову:

A B C D

~~A~~ X

A B C D E F G H

1 ☐ ☐ ☐ ☐ ☐ ☐ ☐ ☒  
2 ☐ ☐ ☐ ☐ ☐ ☐ ☒ ☐  
3 ☒ ☐ ☐ ☐ ☐ ☐ ☐ ☐  
4 ☐ ☐ ☒ ☐ ☐ ☐ ☐ ☐  
5 ☐ ☒ ☐ ☐ ☐ ☐ ☐ ☐

A B C D

6 ☐ ☐ ☒ ☐  
7 ☐ ☒ ☐ ☐  
8 ☐ ☒ ☐ ☐  
9 ☒ ☐ ☐ ☐  
10 ☐ ☐ ☒ ☐

A B C D E F G H

11 ☐ ☐ ☐ ☐ ☐ ☐ ☐ ☒  
12 ☐ ☐ ☒ ☐ ☐ ☐ ☐ ☐  
13 ☒ ☐ ☐ ☐ ☐ ☐ ☐ ☐  
14 ☒ ☐ ☐ ☐ ☐ ☐ ☐ ☐  
15 ☐ ☐ ☐ ☐ ☒ ☐ ☐ ☐  
16 ☐ ☒ ☐ ☐ ☐ ☐ ☐ ☐

A B C D E F G H

17 ☐ ☐ ☐ ☐ ☐ ☒ ☐ ☐  
18 ☐ ☐ ☐ ☒ ☐ ☐ ☐ ☐  
19 ☒ ☐ ☐ ☐ ☐ ☐ ☐ ☐  
20 ☐ ☐ ☒ ☐ ☐ ☐ ☐ ☐  
21 ☒ ☐ ☐ ☐ ☐ ☐ ☐ ☐  
22 ☐ ☐ ☐ ☐ ☐ ☐ ☒ ☐

A B C D

23 ☒ ☐ ☐ ☐  
24 ☒ ☐ ☐ ☐  
25 ☐ ☐ ☒ ☐  
26 ☐ ☒ ☐ ☐  
27 ☐ ☒ ☐ ☐  
28 ☐ ☐ ☒ ☐  
29 ☒ ☐ ☐ ☐  
30 ☐ ☐ ☒ ☐  
31 ☐ ☒ ☐ ☐  
32 ☒ ☐ ☐ ☐

A B C D

33 ☒ ☐ ☐ ☐  
34 ☐ ☒ ☐ ☐  
35 ☐ ☐ ☒ ☐  
36 ☐ ☒ ☐ ☐  
37 ☐ ☒ ☐ ☐  
38 ☒ ☐ ☐ ☐  
39 ☐ ☒ ☐ ☐  
40 ☐ ☐ ☒ ☐  
41 ☒ ☐ ☐ ☐  
42 ☒ ☐ ☐ ☐